



DATASHEET

Thermowell



SMTech Engineering Solution

Gat No. 77, Plot No. 05, Opposite Sharp Engg.
Jyotibanagar, Talawade, Pune – 411062
Web.: www.smttech.co.in | E-mail: info@smttech.co.in



SMTech
A COMPLETE SOLUTION



Flushing Ring



Product overview

Thermowells for temperature instruments are recommended for all process systems where pressure, velocity or viscous, abrasive and corrosive materials are present individually or in combination. A properly selected thermowell will protect the temperature instrument from possible damage resulting from these process variables.

Furthermore, a thermowell permits removal of the temperature instrument for replacement, repair or testing without effecting the process media or the system.

Applications

- Chemical, process, apparatus and plant engineering; petrochemical; on offshore
- High chemical loads
- High process loads

Standard Features

- Type: Drilled Barstock, Fabricated
- Construction: Tapered, Straight, Stepped, Helical
- Thermowell Material: SS-304/304L, SS-316/316L
- Process Connection: Screwed, Flanged

Optional Features

- Material: SS-321, Alloy 20, Hastelloy C276, Monel 400, Inconel 600, Titanium (More material on request)
- Special requirements for Stellite overlay for corrosion resistance, PTFE and other protective coating is also available.

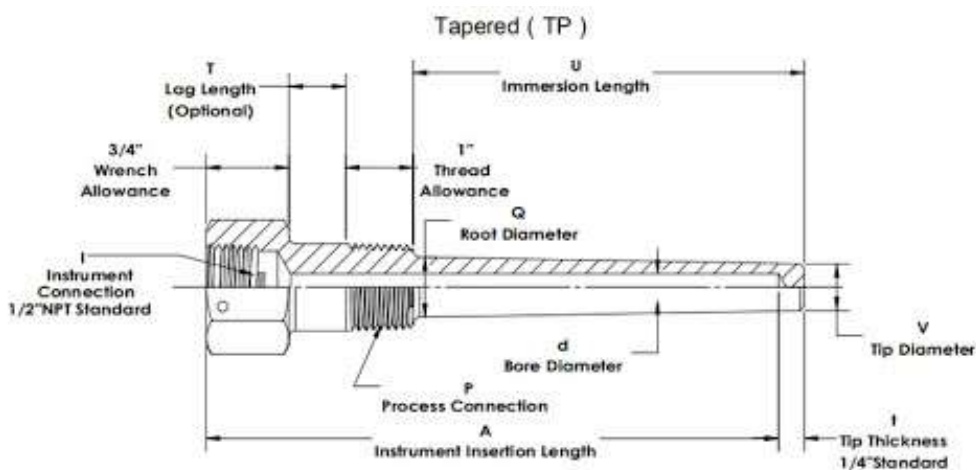




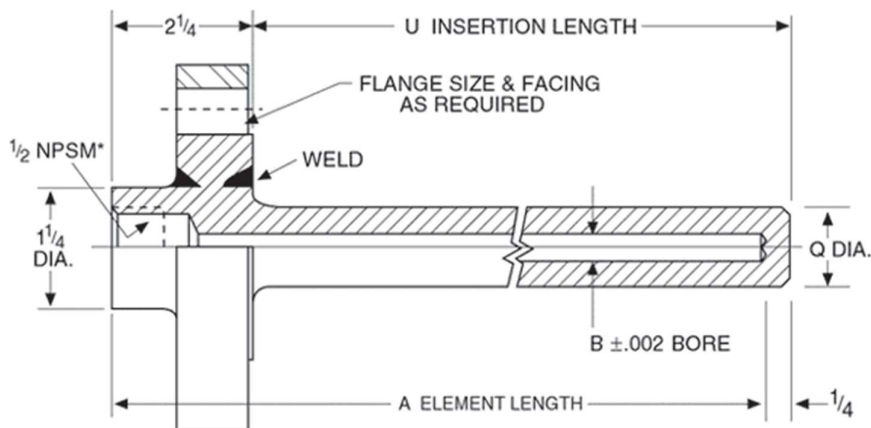
Flushing Ring

Technical Specifications

Threaded Thermowell



Flanged Thermowell



Note:

Other process connections and materials on request

Sealing gasket are not part of standard supply and should be made of a material appropriate for process medium.

Documentation

Following documents shall be provided as a standard part of supply,

- 1) Dimensional test report.
- 2) Material certificate 3.1 acc. to EN-10204 for all wetted parts

For inquiries contact us at:

SMTech Engineering Solution

Gat No. 77, Plot No. 05, Opposite Sharp Engg.

Jyotibanagar, Talawade, Pune – 411062

Web.: www.smttech.co.in | E-mail: info@smttech.co.in



SMTech
A COMPLETE SOLUTION